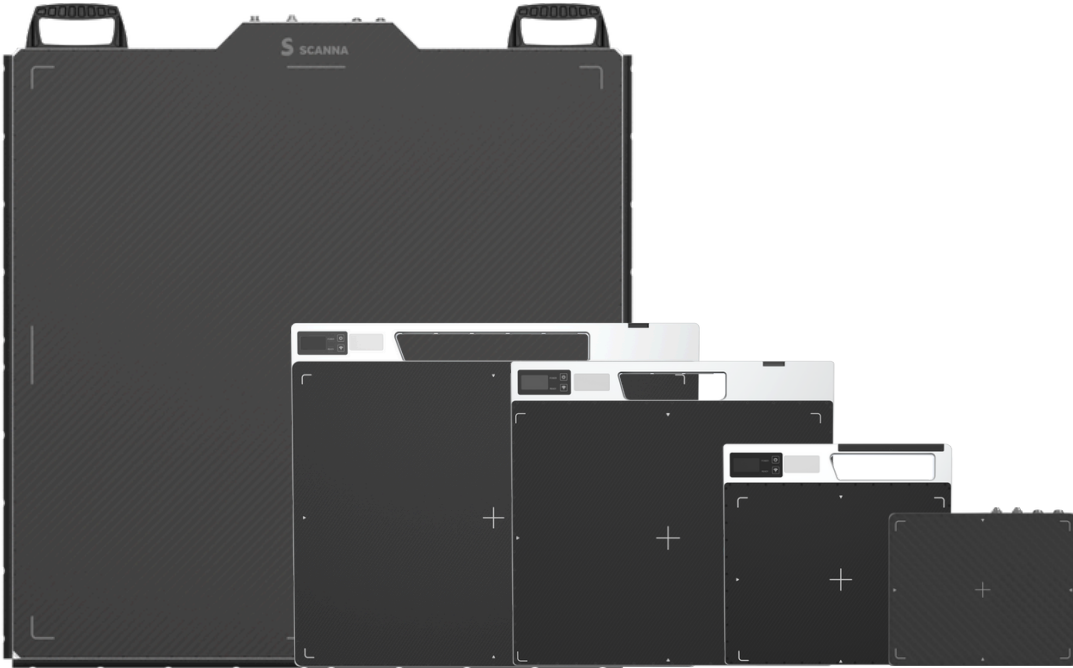
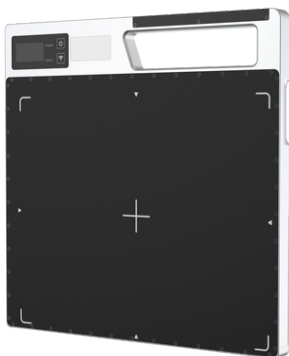


# SCANSILC RUGGED PORTABLE X-RAY SYSTEMS



Lightweight, Rugged X-ray systems designed around your task. One high resolution x-ray detector, one lightweight pulsed x-ray generator and one controller/viewer preloaded with ScanView software, ready to go in a rugged transport case or backpack.

**1.**



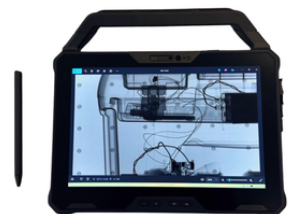
**DETECTOR  
PANEL**

**2.**



**X-RAY  
GENERATOR**

**3.**



**CONTROLLER/  
SOFTWARE**

**Scansilc makes creating your ideal x-ray system as easy as 1,2,3**

# SCANSILC X-RAY DETECTOR PANELS

- Lightweight and Robust Detector Panels - range of sizes to meet a wide range of x-ray tasks
- High Resolution X-ray Images - with one click image clarity
- Impact and Drop Tested to 1M - robust enough for police and military field based tasks
- Dust Ingress and Water Resistant to IP67 - reliable in challenging environments
- Slim Format to access tight spaces

Fast Image transfer to Windows Tablet, Laptop or phone using:

- Wired/cabled mode
- Wireless mode - short and long range
- Secure, encrypted military radio
- Storage mode - collect images and transfer to laptop back at ICP

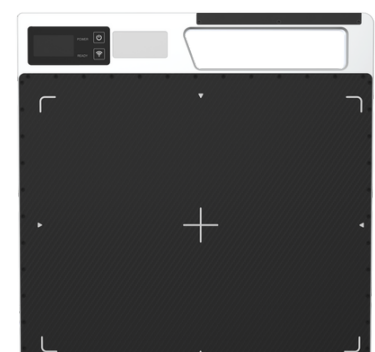


**SCANSILC 1824**

Parameter	Specification
Dimensions	265 x 215 x 21.8 mm / 10.4 x 8.5 x 0.86"
Active Area	175 x 233 mm / 6.9 x 9.2 "
Weight	1.7 kg / 3.75 lbs
Resolution	6.5 lp/mm
Pixel Pitch	76 µm
Ruggedised	IP67 & 1m [3 ft] Drop Test

Tactical X-ray panel size 18 x 24 cm. Operates with back-to-back tablet enabling fast placement at target.

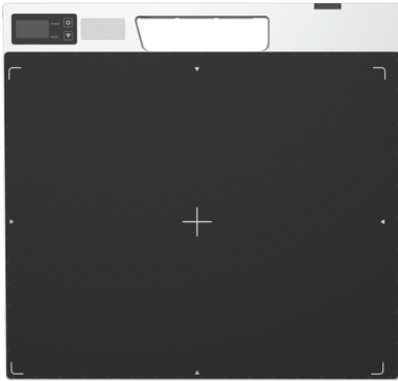
Parameter	Specification
Dimensions	325 x 318 x 20 mm / 12.8 x 12.5 x 0.79 "
Active Area	233.5 x 291.8 mm / 9.19 x 11.49 "
Weight	2.0 kg / 4.41 lbs
Resolution	6.5 lp/mm
Pixel Pitch	76 µm
Ruggedised	IP67 & 1m [3 ft] Drop Test



**SCANSILC 2430U**

Compact X-ray panel size 24 x 30 cm with 76 micron image resolution.

# SCANSILC X-RAY DETECTOR PANELS



**SCANSILC 3643U**

Parameter	Specification
Dimensions	456.2 x 435.5 x 20 mm / 18.0 x 17.1 x 0.79 "
Active Area	353.4 x 430.2 mm / 13.91 x 16.94 "
Weight	3.9 kg / 8.6 lbs
Resolution	5 lp/mm
Pixel Pitch	100 µm
Ruggedised	IP67 & 1m [3 ft] Drop Test

Standard format X-ray panel size 36 x 43 cm for a wide range of search and inspection tasks.

Parameter	Specification
Dimensions	520.2 x 609.8 x 20 mm
Active Area	430 x 573 mm
Weight	5.9 kg
Resolution	3.5 lp/mm
Pixel Pitch	140 µm
Ruggedised	IP67 & 1m [3 ft] Drop Test

Large format X-ray panel size 43 x 57 cm for checking cabin bag sized items in a single scan.



**SCANSILC 4357U**

Parameter	Specification
Dimensions	900 x 967 x 27.5 mm / 35.43 x 38.07 x 1.08 "
Active Area	860 x 860 mm / 33.86 x 33.86 "
Weight	20.5 kg / 45.2 lbs
Resolution	3.5 lp/mm
Pixel Pitch	140 µm

Super-sized X-ray panel 86 x 86 cm for screening oversized objects and vehicles without needing a slider system.



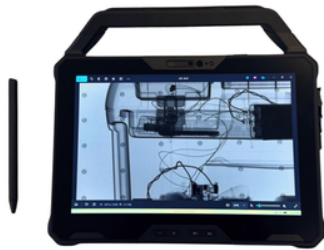
**SCANSILC 8686**

# X-RAY CONTROLLERS AND SOFTWARE

## Controllers



**Handheld**



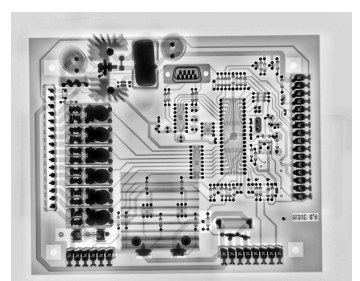
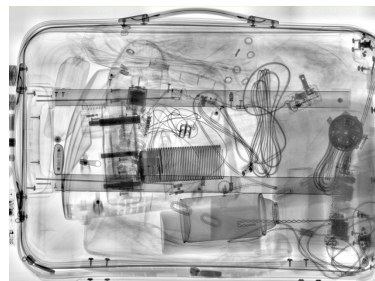
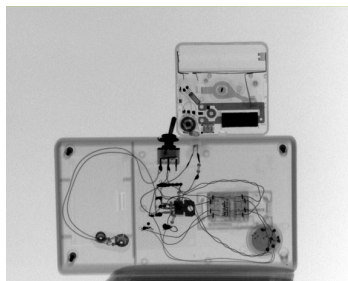
**Tablet**



**Laptop**

ScanSilc systems come complete with a choice of handheld, tablet or laptop controller, pre-configured to control your X-ray Detector and X-ray Generator using either ScanView X-ray Imaging Software or XTK [X-ray Toolkit]

## ScanView Software



Scanna's **ScanView** software uses an intuitive UI allowing you to pick up and start using your x-ray system with the minimum of training. Images are quick and easy to adjust using one click enhancement filters and multiple image captures auto-stitch together in seconds. Images can be stored and managed with raw image data within the software database for evidence chain of custody or exported as windows format files for use within reports or third party sharing.

**Get in touch to learn how ScanSilc can help you with your next x-ray task.**

[scanna-msc.com](http://scanna-msc.com)

Telephone: +44(0) 207 355 3555

Email: [info@scanna-msc.com](mailto:info@scanna-msc.com)