

PRELIMINARY DATA



# SCANSILC 1024-NDT

LIGHTWEIGHT X-RAY PANEL for NDT

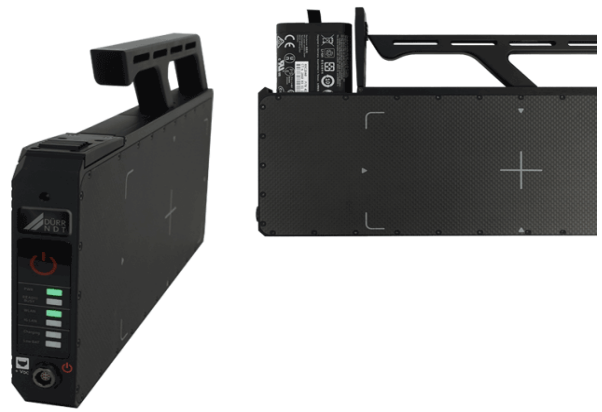
# SCANSILC 1024-NDT - LIGHTWEIGHT X-RAY PANEL FOR INDUSTRIAL APPLICATIONS

The new **Scansilc 1024** has the identical active area size as NDT RT Film, making it perfect for weld inspection.

Built into a lightweight and rugged design, the **Scansilc 1024** is a reliable and portable Solution for harsh industrial environments.

Offers a high quality and high resolution Image 16 bit image with a Pixel Pitch of 76 microns/6.5 lp/mm and resolution of 1,280 x 3,072 pixels.

Operates with lightweight Golden pulsed x-ray generators or conventional CP x-ray sources up to 350kv



## Technical Specifications

<b>Model</b>	<b>1024 NDT</b>
<b>Sensor Type</b>	CSI, GoS
<b>Resolution</b>	1280 x 3072 pixels
<b>Pixel pitch</b>	76 µm
<b>Dynamic Range</b>	16-bit
<b>Active area</b>	97 mm x 233 mm [3.82" x 9.2"]
<b>Dimensions (H x W x D)</b>	132 mm x 335 mm x 30 mm (without handle)
<b>Weight</b>	2.2 kg [4.9 lbs]
<b>Interface</b>	Gigabit Ethernet, WLAN: 2.4 GHz [802.11abgn] / 5 GHz [802.11ac]
<b>Exposure time</b>	0.5 s to 180 s
<b>Image transfer time (wired/wireless)</b>	1.9 s / 2.6 s
<b>X-ray Interface</b>	Software Trigger (wired/Wi-Fi)- Auto Detect (AED)
<b>Max. energy</b>	350 kV [for long life in typical applications], Isotopes [higher energies possible]
<b>Battery</b>	Lithium-ion [11.25 V, 33.2 Wh]
<b>Operating conditions</b>	0 to 45°C [32 to 113°F], 30 to 85 % humidity
<b>Protection level</b>	IP67 [dust-tight and waterproof]
<b>X-ray Source</b>	Pulsed/CP



[www.scanna-msc.com](http://www.scanna-msc.com)

SCANNA MSC Inc  
2910 Hyde Park Street  
Sarasota, Florida 34239

Tel: 941-925-9730  
Email: [info@scanna-msc.com](mailto:info@scanna-msc.com)