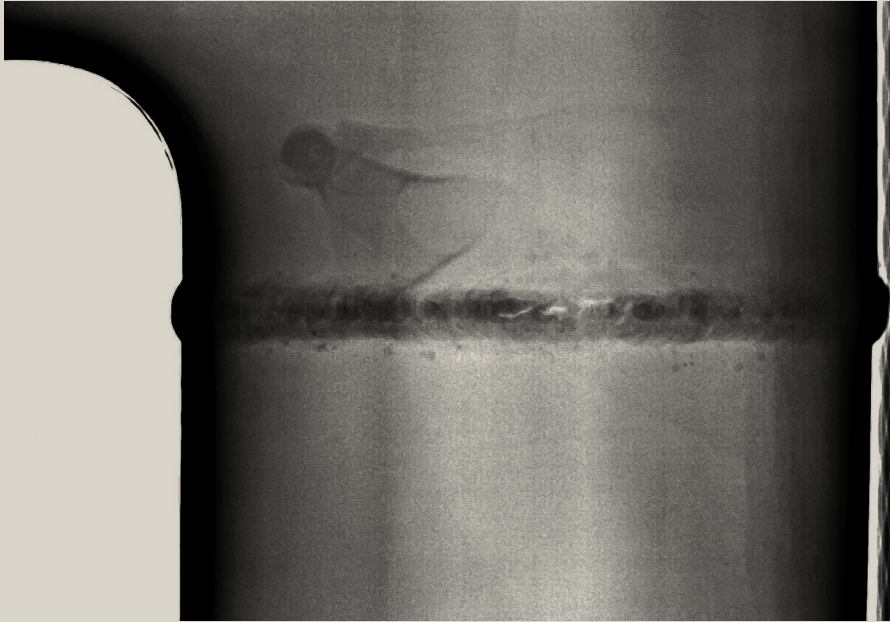


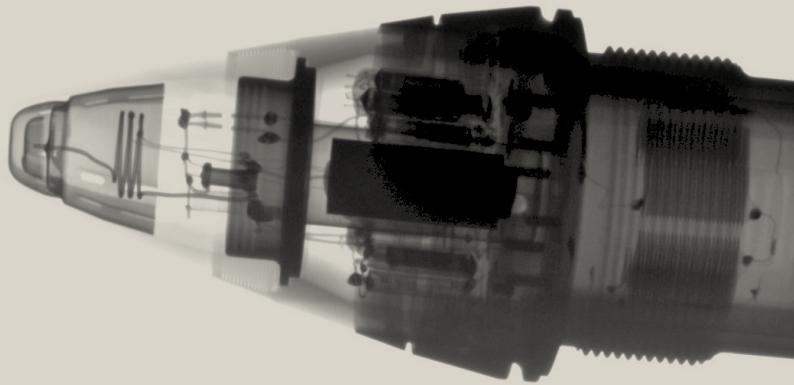
SCANNA

**PORTABLE  
X-RAY  
SYSTEMS  
FOR NDT**

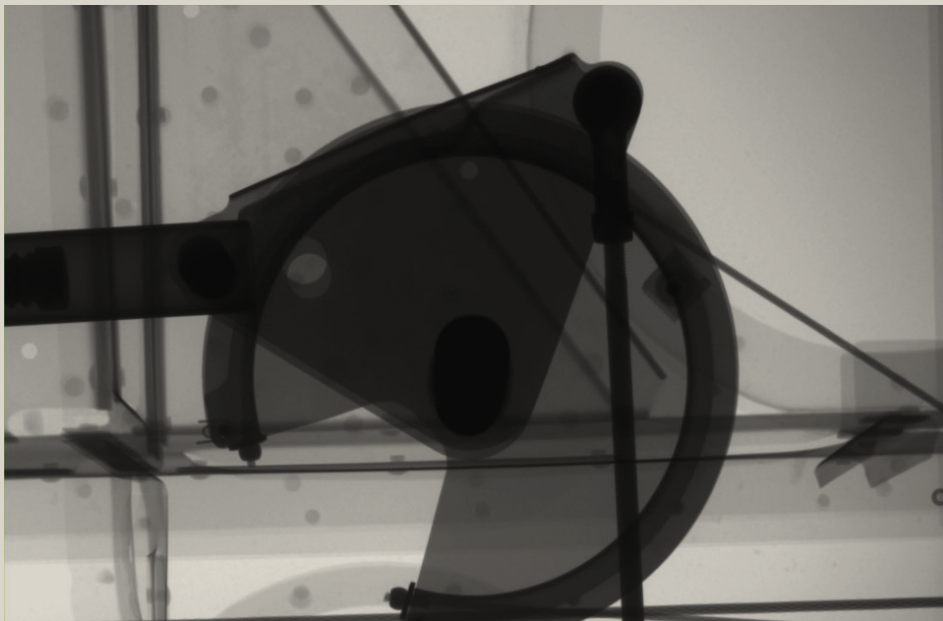
*PROTECTING PEOPLE AND  
INFRASTRUCTURE WORLDWIDE,  
WITHOUT COMPROMISE*



**WELD INSPECTION**



**MUNITIONS**



**AEROSPACE**

# ABOUT

Scanna has been designing and manufacturing portable x-ray systems and detection Equipment for the military and security sectors for over 30 years. Scanna X-ray equipment is trusted in more than 100 countries and is used with UK MoD, US DoD, NATO forces, Police and Specialist Agencies.

With operations in the UK and USA, we offer on-site training and support wherever our clients have a presence around the globe. Our ethos *without compromise* underpins everything we do – from design and manufacture, through to installation, training and support.

Scansilc are our rugged portable DR X-ray systems, which have been expertly designed for operators to use in the challenging environments of Defense and NDT. Scansilc NDT Imagers have near edge to edge imaging with best in class resolution, allow for accidental impact and drops, and are IP67 - designed for use in all weather conditions without any additional protective cover.

Introducing our product line for non-destructive testing (NDT) from the full x-ray systems to individual components – detectors, generators, tablets/PCs and software.

## Why Scanna?

- High Image Quality
  - Reliability
  - Ease of Use
- Professional support

**PROTECTING PEOPLE AND INFRASTRUCTURE WORLDWIDE,  
WITHOUT COMPROMISE**



### 1. DETECTOR

SCANSILC 1824



### 2. GENERATOR

GOLDEN XR150



### 3. CONTROLLER

PANASONIC FZ-G2

**WITH SYSTEMS AS EASY AS 1,2,3.**

# DETECTORS

SCANSILC

THE SCANNA RANGE OF SCANSILC NDT X-RAY DETECTORS ARE:

- **LIGHTWEIGHT AND ROBUST**
- **PROVIDE HIGH IMAGE QUALITY**
- **DROP TESTED & IP67 RATED – SUITABLE FOR FIELDWORK AND HARSH CONDITIONS - NO PROTECTIVE COVER NEEDED!**
- **SLIM FORM FACTOR SUITABLE FOR TIGHT GAPS AND FLEXIBILITY OF USE**

OUR SCANSILC DETECTORS CAN OPERATE IN WIRED, WIRELESS AND STORAGE MODE.

- **WIRED MODE (1M, 3M, 15M, 25M, 50M, 100M+)**
- **WIRELESS MODE (100-400M LOS)**
- **STORAGE MODE (OVER 100 IMAGES!)**



SCANSILC 1024NDT

**Dimensions:** 265 x 215 x 21.8 mm /  
10.4 x 8.5 x 0.86"

**Active Area:** 180 x 233 mm / 7.1 x 9.4"

**Weight:** 1.7 kg / 3.75 lbs

**Resolution:** 2304 x 3072 pixels

**Pixel Pitch:** 76  $\mu$ m

**kV Range:** 160 kV / Golden pulsed up to XRS-4

**Ruggedised:** IP67 & 1m Drop test

**Dimensions:** 132 x 335 x 30 mm (without handle)  
5.2 x 13.2 x 1.2"

**Active Area:** 97 x 233 mm [3.82 x 9.2"]

**Weight:** 2.2 kg + /

**Resolution:** 1280 x 3072 pixels

**Pixel Pitch:** 76  $\mu$ m

**kV Range:** 160 - 350 kV models available

**Ruggedised:** IP67 & 1m Drop test



SCANSILC 1824

# DETECTORS

## SCANSILC



SCANSILC 2430NDT

**Dimensions:** 327 x 362 x 21.5 mm /  
12.8 x 14.2 x 0.8"

**Active Area:** 233 x 300 mm / 11.45 x 9"

**Weight:** 2.8 kg / 7 lbs

**Resolution:** 3840 x 3072 pixels

**Pixel Pitch:** 76  $\mu$ m

**kV Range:** 160-350kV

**Ruggedised:** IP67 & 1m Drop test

**Dimensions:** 465 x 438.5 x 20mm /  
18.3 x 17.2 x 0.78"

**Active Area:** 358 x 430mm // 14 x 17"

**Weight:** 4.4 kg / 9.7 lbs +

**Resolution:** 2560 x 3072 pixels

**Pixel Pitch:** 140  $\mu$ m

**kV Range:** 160-350kV

**Ruggedised:** IP67 & 1m Drop test



SCANSILC 3643NDT

**Dimensions:** 900 x 900 x 21 mm /  
35.4 x 35.4 x 0.8"

**Active Area:** 860 x 860mm / 34 x 34"

**Weight:** 18 kg / 39.7 lbs

**Resolution:** 6144 x 6144 pixels

**Pixel Pitch:** 140  $\mu$ m

**kV Range:** 160kV / Golden pulsed up to XRS-4

**Ruggedised:** IP67



SCANSILC 8686

# GENERATORS

**SCANNA CAN SUPPLY PULSED X-RAY SOURCES FROM GOLDEN ENGINEERING. WITH A SCANSILC SYSTEM NO INTERFACE/CONTROL BOX IS NEEDED TO FIRE AND CONTROL THE GOLDEN SOURCE. THIS MEANS LESS CABLES, CONNECTORS AND LESS TO GO WRONG!**



GOLDEN XR150

**Dimensions:** 267 x 120 x 89.9 mm / 10.5 x 4.71 x 3.54"

**Weight:** 2.6 kg / 5.7 lbs (including battery)

**Max kVp:** 150 kVp

**Output dose:** 2-2.8 mR / pulse (12" from source)

**Pulse rate:** 10 pulses per second



GOLDEN XR200

**Dimensions:** 272 x 148 x 108 mm / 10.7 x 5.83 x 4.26"

**Weight:** 4.8 kg / 10.7 lbs (including battery)

**Max kVp:** 150 kVp

**Output dose:** 2.6 mR / pulse (12" from source)

**Pulse rate:** 10 pulses per second



GOLDEN XRS3

**Dimensions:** 361 x 148 x 109 mm / 14.2 x 5.83 x 4.28"

**Weight:** 5.3 kg / 11.8 lbs (Including battery)

**Max kVp:** 270 kVp

**Output dose:** average 2.6 mR / pulse (12" from source)

**Pulse rate:** 15 pulses per second



GOLDEN XRS4

**Dimensions:** 489 x 179 x 122 mm / 19.3 x 7.05 x 4.80"

**Weight:** 8.3 kg / 18.3 lbs (Including battery)

**Max kVp:** 370 kVp

**Output dose:** 4.5-7 mR / pulse (12" from source)

**Pulse rate:** 9 pulses per second



CP AND ISOTOPES

**CUSTOMERS CAN USE SCANSILC DETECTOR PANELS WITH ANY EXISTING SOURCE.**

**SCANSILC DETECTOR PANELS ARE SUITABLE FOR PULSED, CONSTANT POTENTIAL AND GAMMA SOURCES.**

# CONTROLLERS



HANDHELD



TABLET



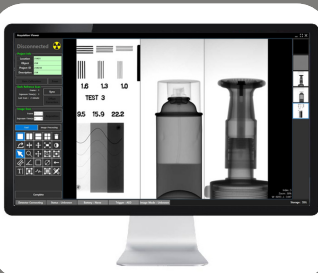
LAPTOP

## SOFTWARE



SCANVIEW

**OUR EASY TO USE SOFTWARE DESIGNED TO CONTROL THE GOLDEN PULSED GENERATOR AND ACQUIRE AN IMAGE. IMAGES CAN BE QUICKLY EXPORTED TO YOUR CHOSEN IMAGE MANIPULATION SOFTWARE.**



NDPRO

**A STATE OF THE ART SOFTWARE FOR ALL IMAGING AND MANIPULATION FEATURES. USES DICONDE STANDARD FOR INTEGRATED WORKFLOW.**





## SCANSILC NDT



## CONTACT US

**Scanna Msc Ltd**  
223 Regent street,  
London, W1B 2EB  
+44 (0)207 355 3555  
[info@scanna-msc.com](mailto:info@scanna-msc.com)

**Scanna Msc Inc**  
2910 Hyde Park Street  
Sarasota, Florida 34239  
+1 941-925-9730  
[info@scanna-msc.com](mailto:info@scanna-msc.com)