

# SCANSILC 3643U

## LARGE DR X-RAY

### Overview

#### SCANSILC 3643U – Large-Format X-Ray Built for the Field

**SCANSILC 3643U** delivers robust, large-area imaging [36 × 43 cm] for security, defence, and EOD operations. Designed to withstand harsh environments, it is dust and water-tight and impact and drop-resistant to 1 m, ensuring dependable performance in the field.

Intelligent in-panel control circuitry eliminates the need for a separate communications box, allowing fast, hassle-free deployment. The inbuilt OLED screen provides real-time operational awareness, while dual in-panel batteries support extended field operations.

Compatible with both pulsed and CP x-ray generators, operators can control the system wired or wirelessly from a tablet or laptop—no extra interface required. The panel's stand-alone AED mode allows full manual control, including custom firing delays or a dead man's switch for safe, precise operations.

Available as a complete portable system or as an upgrade/extension panel, the **SCANSILC 3643U** delivers power, flexibility, and reliability for mission-critical field operations.

### Highlighted Features

**High definition images** - 100 microns - 5 lp/mm

**Uniquely designed for security applications** - not a fragile medical/veterinary panel in a protective cover.

**Multiple Operational modes** -

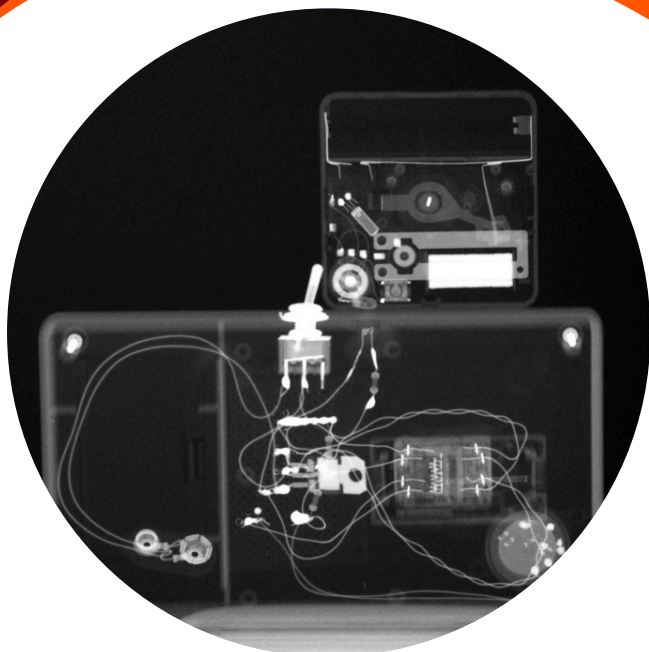
- Synchronised wired or wireless control from a tablet/laptop,
- Standalone AED [Automatic Exposure detection] Mode
- Storage Mode - collect 300 target images on the panel for download on demand

**Ruggedised Unibody design** - drop tested to 1m [3 ft] on all 4 corners.

**IP67 environmental protection** against dirt, dust and water ingress. IP68 connectors.

**Dual hot-swappable in-panel batteries and spare battery** providing extended field operational capability.





## TECHNICAL INFORMATION

Parameter	Specification
Nominal Image Area	360 x 430 mm
Active Image Area	353.4 x 430.2 mm
Pixel Pitch	100 micron
Resolution	5 lp/mm
Physical Dimensions	457.2 [w] x 435.5 [h] x 20 [d] mm
Weight	3.9 kg
Environmental Protection	IP67 [Dust and water resistance]
Drop Test	1m on all 4 corners
Bottom Dead Area	3 mm

The **ScanSilc 3643U** is compatible with all **Golden XR** pulsed X-ray generators as well as other CP X-ray sources. You can synchronize, control and trigger your X-ray generator directly through our **Scanview** software, or operate and fire your X-ray source manually using **AED** or **Storage Modes**.



XR150 - 150 kV

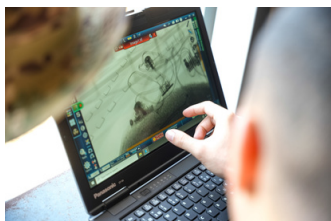
XR200 - 150 kV

XRS-3 - 270 kV

XRS-4 - 370 kV

XRS-3 /XRS-4 MD Multi-Directional

Select from a range of semi rugged and fully rugged Windows Tablets and Laptops with screen sizes from 8-22" to control the x-ray source and view, enhance and manage images. Use with proprietary Scanview Imaging Software and/or XTK imaging software [for Govt approved users].



ScanSilc 3643U-V5,I2-UK

[scanna-msc.com](http://scanna-msc.com)

Telephone: +44[0] 207 355 3555

Email: [info@scanna-msc.com](mailto:info@scanna-msc.com)